



Operating Instructions

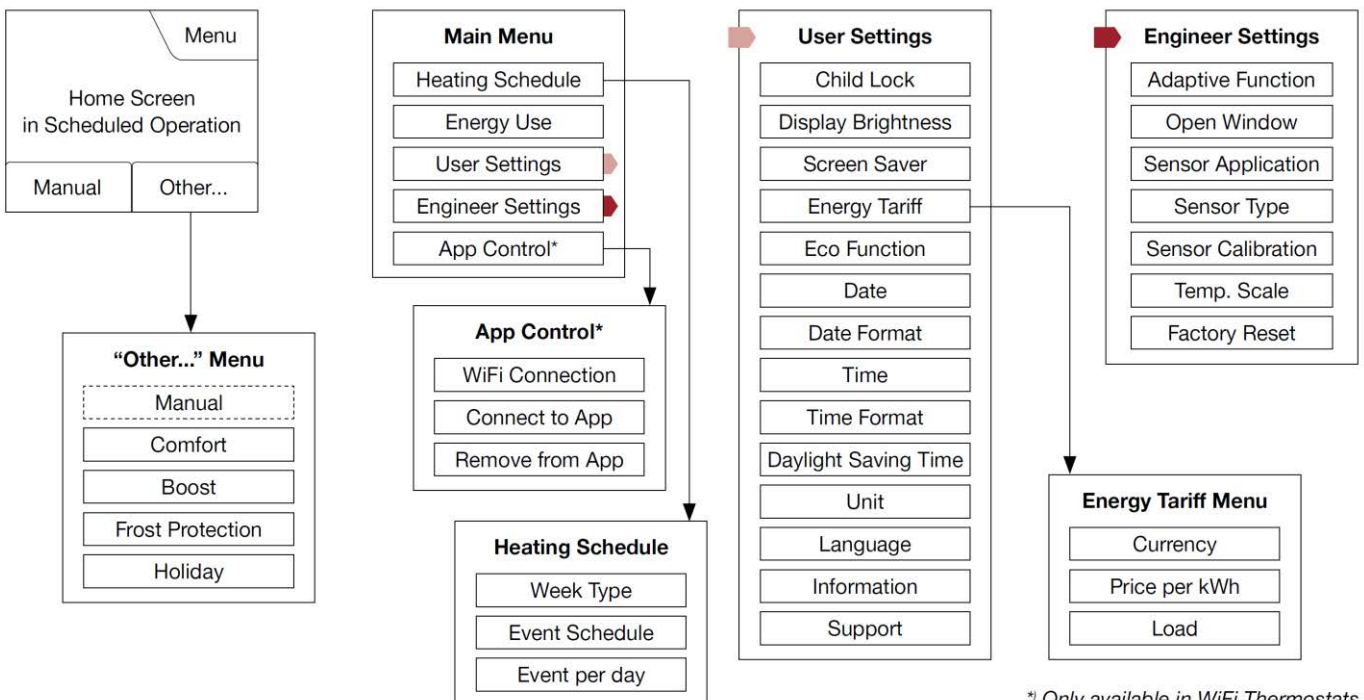
Colour Touch Thermostats

W3WT01 & W3WT02 (Wi-Fi)

Models W3WT01 and W3WT02 (WiFi)

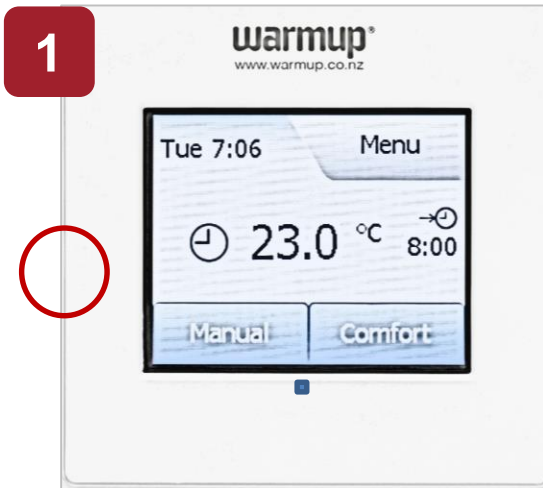


Menu Structure

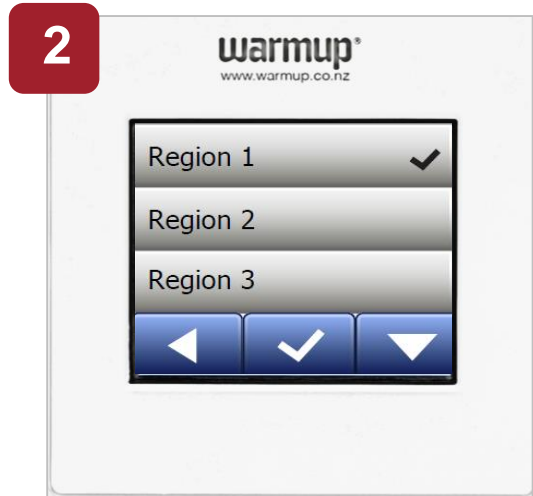


^{*)} Only available in WiFi Thermostats

Startup Wizard



Turn on the thermostat (you will find the switch on the left)



Select your region and confirm with “✓”
It should default to ‘New Zealand’



Select your language and confirm with “✓”



Use the easy navigation to set the date using the buttons to toggle selections. Confirm each setting with “✓”



Use the easy navigation to set the time using the buttons to toggle selections. Confirm each setting with “✓”



Select the type of floor covering –
Tile: floors made of tile or stone
Soft Floor: carpeted, wooden or other engineered floors

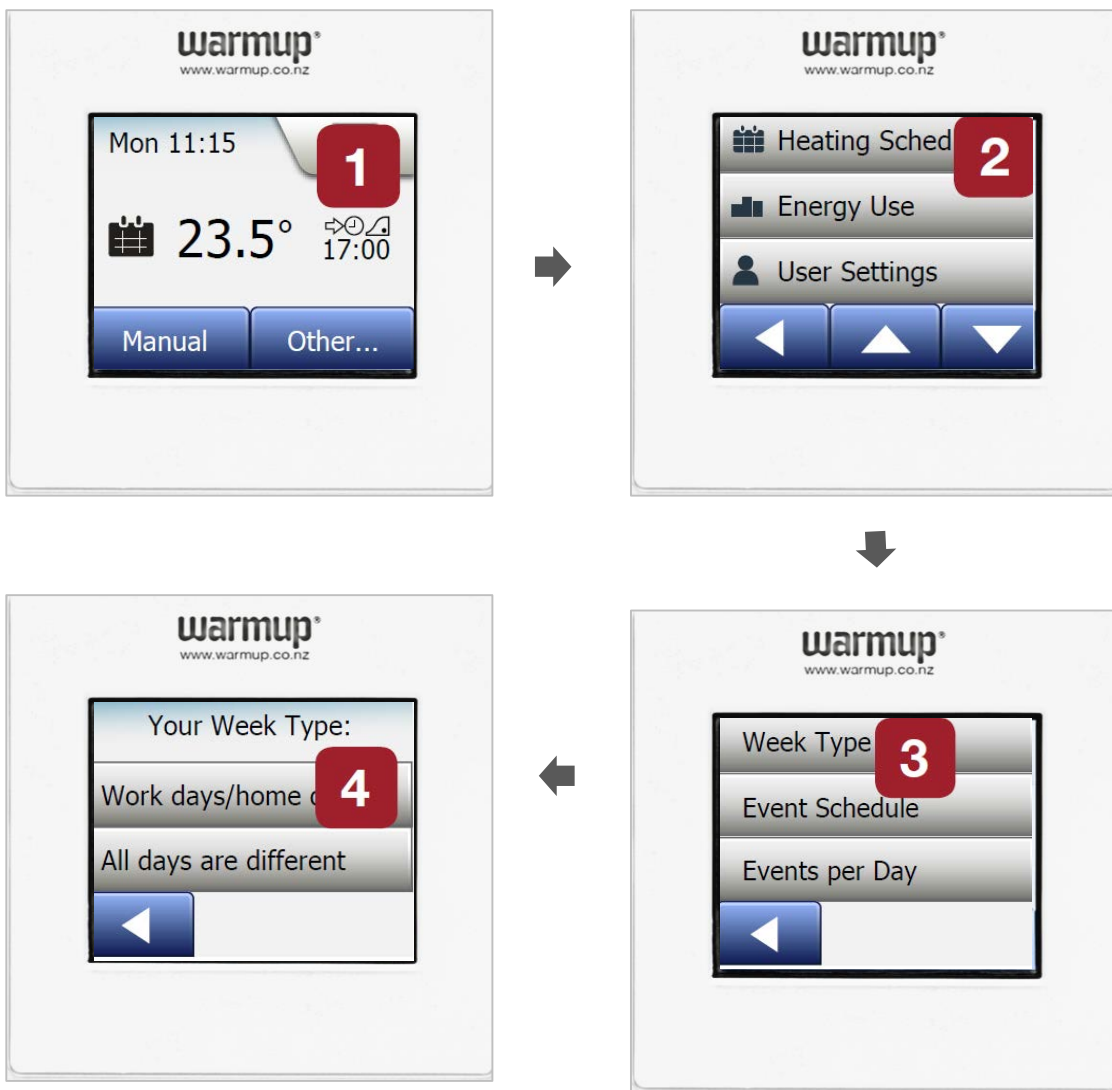
Pre-programmed schedule

The thermostat comes with pre-programmed schedule for easy and economic heating control of most homes. Below are the factory settings or the preset schedule.

Wake Up	Leave Home	Come Home	Go to Sleep
5:30	8:00	18:00	21:30
24°C	16°C	24°C	16°C

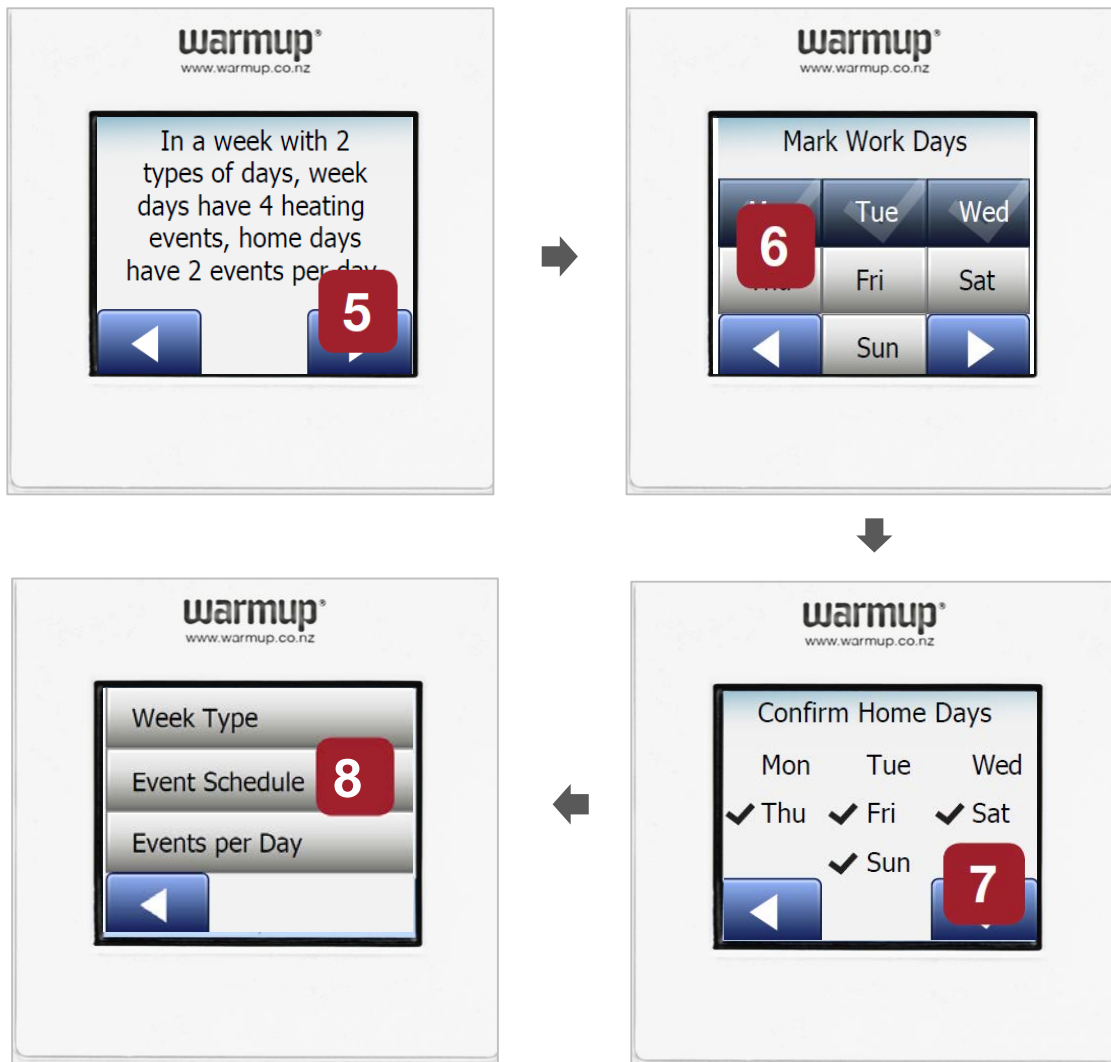
This schedule can be changed in the Heating Schedule menu.

Personalise your settings - Week Type



1. Select the Menu button on the top right to reveal the list of options
2. Start with selecting "Heating Schedule"
3. Then select "Week type"
4. Select "Work days/Home days. Select " All days are different if your heating times are different for all days of the week.

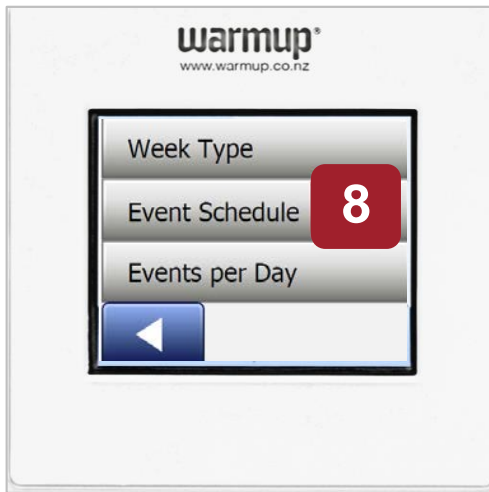
Personalise your settings - Week Type (cntd)



* In step 4 if you selected 'All days are different' – skip steps 5, 6 and 7 and go to Step 8 and select 'Event Schedule'

5. Select the right arrow
6. Mark your "Work days" and confirm
7. Then confirm "Home days".
8. You will now see the Heating Schedule menu

Personalise your settings - Event Schedule

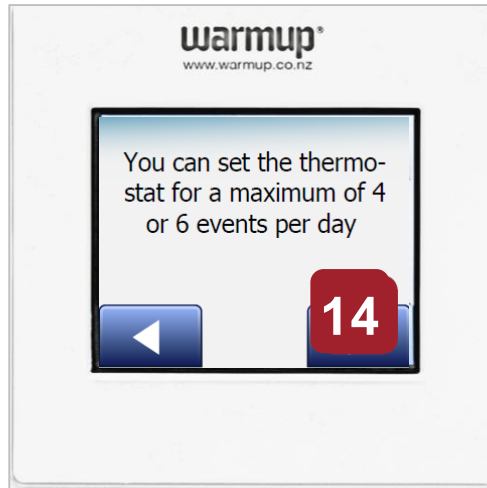
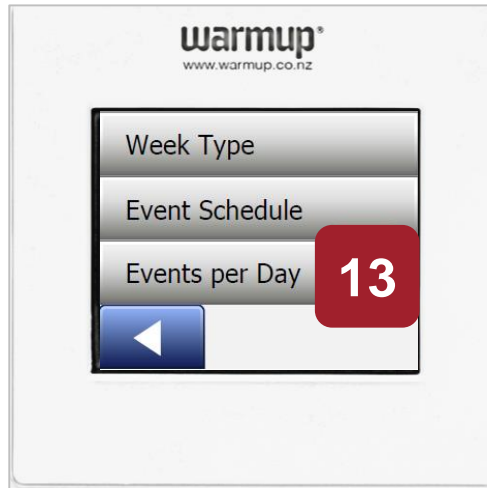


If you have selected 'All days are different' you will have to enter the schedule separately for each day of the week.

Should there be a break in your routine or you find that there are days when it may be a little colder or warmer than usual, you can adjust these settings manually. When done, close the screen and your display will update accordingly.

Remember that the temperature on the display is your current room temperature. It will take some time for your thermostat to heat up to the new temperature.

Personalise your settings - Events per day



Personalise your settings - WiFi (for Model W3WT02 only)



1. Menu
2. App Control
3. Wifi Connection
4. Manual
5. Select your network
6. Enter your password
7. Connect to App
8. Select QR code – you will now see the QR code on the display screen

9. Now go to your mobile and download the “SWATT” app
<https://play.google.com/store/apps/details?id=com.ojelectronics.owd5.r1099&hl=en>

Open the app

Get started

Accept terms and conditions

Click on “Connect Thermostat”

Next

Scan the QR code on the thermostat
You will now be asked to name the thermostat and the heating zone Eg
Thermostat : Smith home Heating
Zone – Ensuite
Next.

Create a user name and password

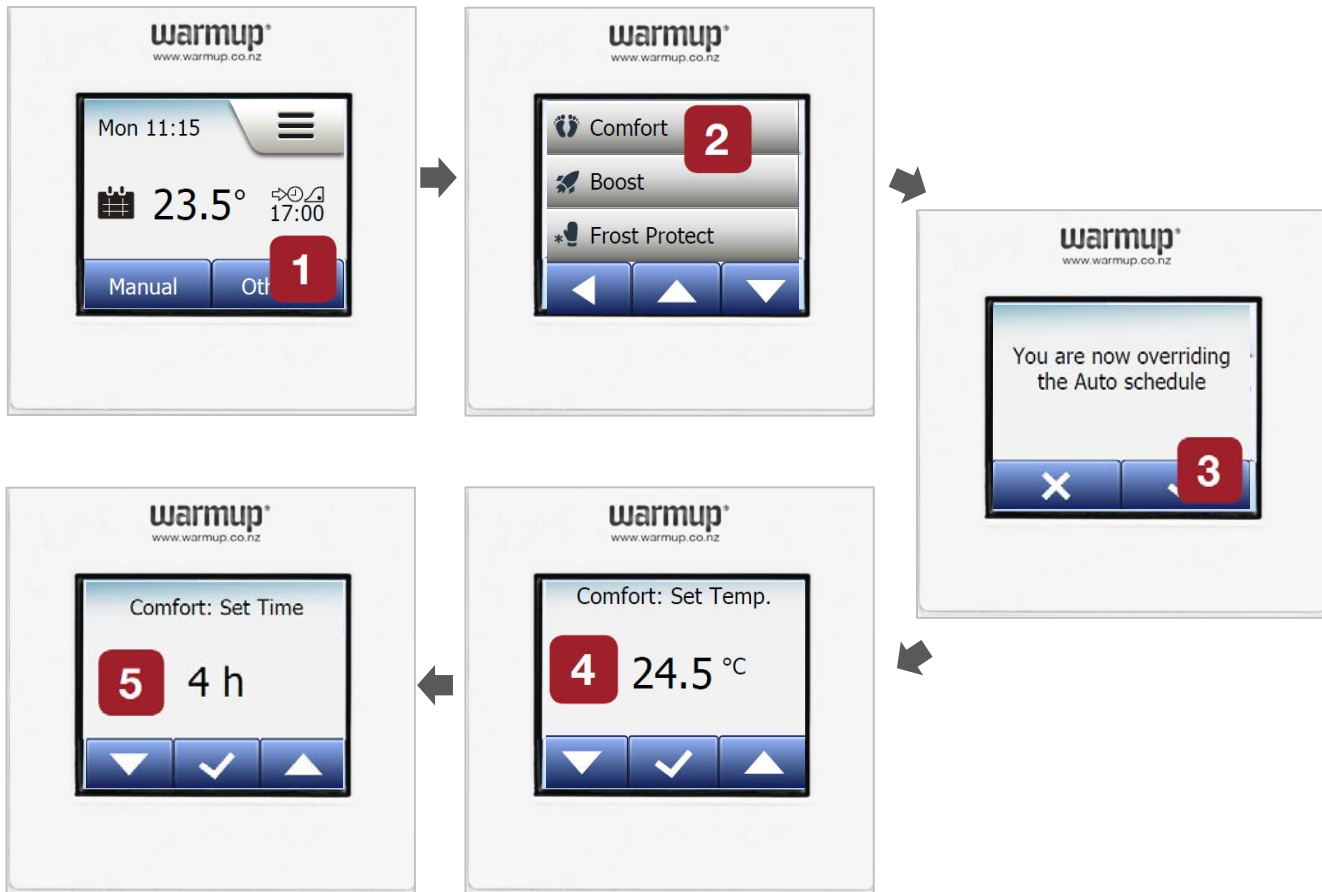
Create Account and then select next

Comfort Mode



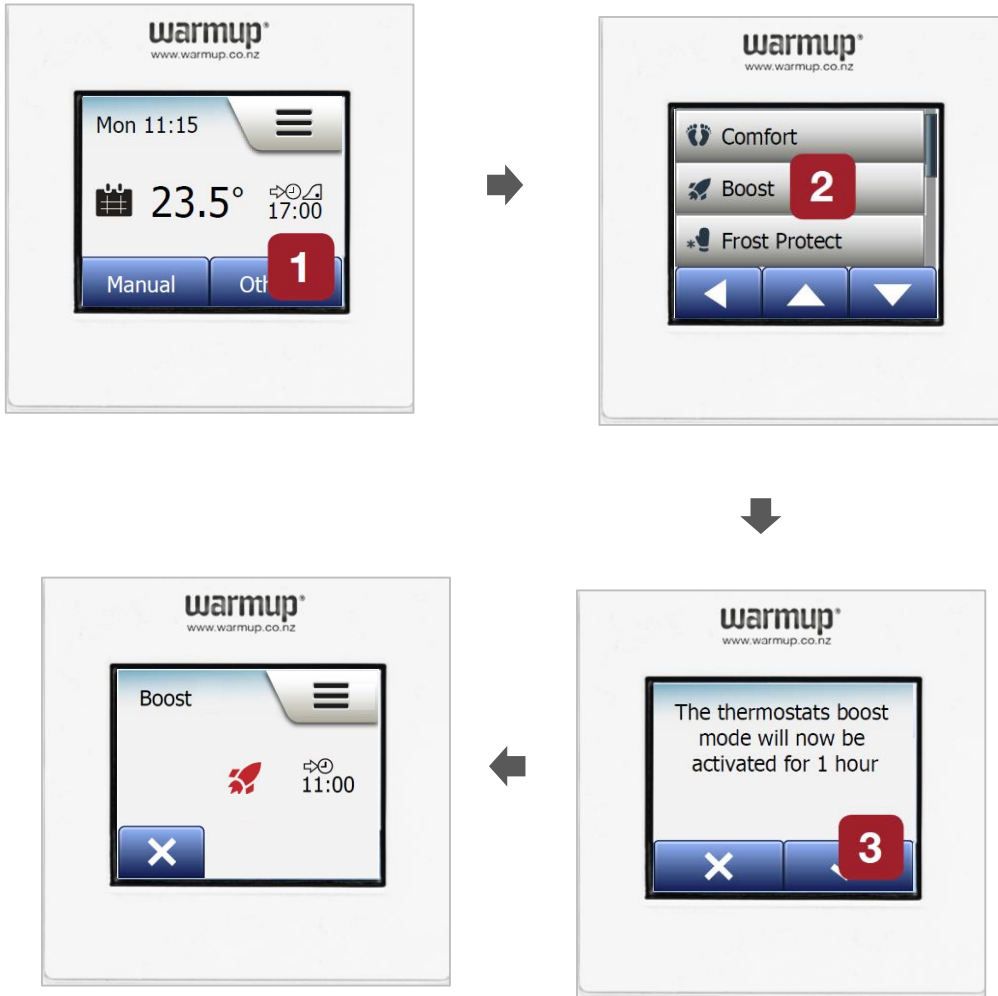
When there is a drop in temperature and you need to increase the heating temperature, Select the 'Other' button on the bottom right – go to 'Comfort'. Select the temperature and duration.

This will temporarily override your programme settings for the period of time selected. Once that time is up, the thermostat will default to your original setting.



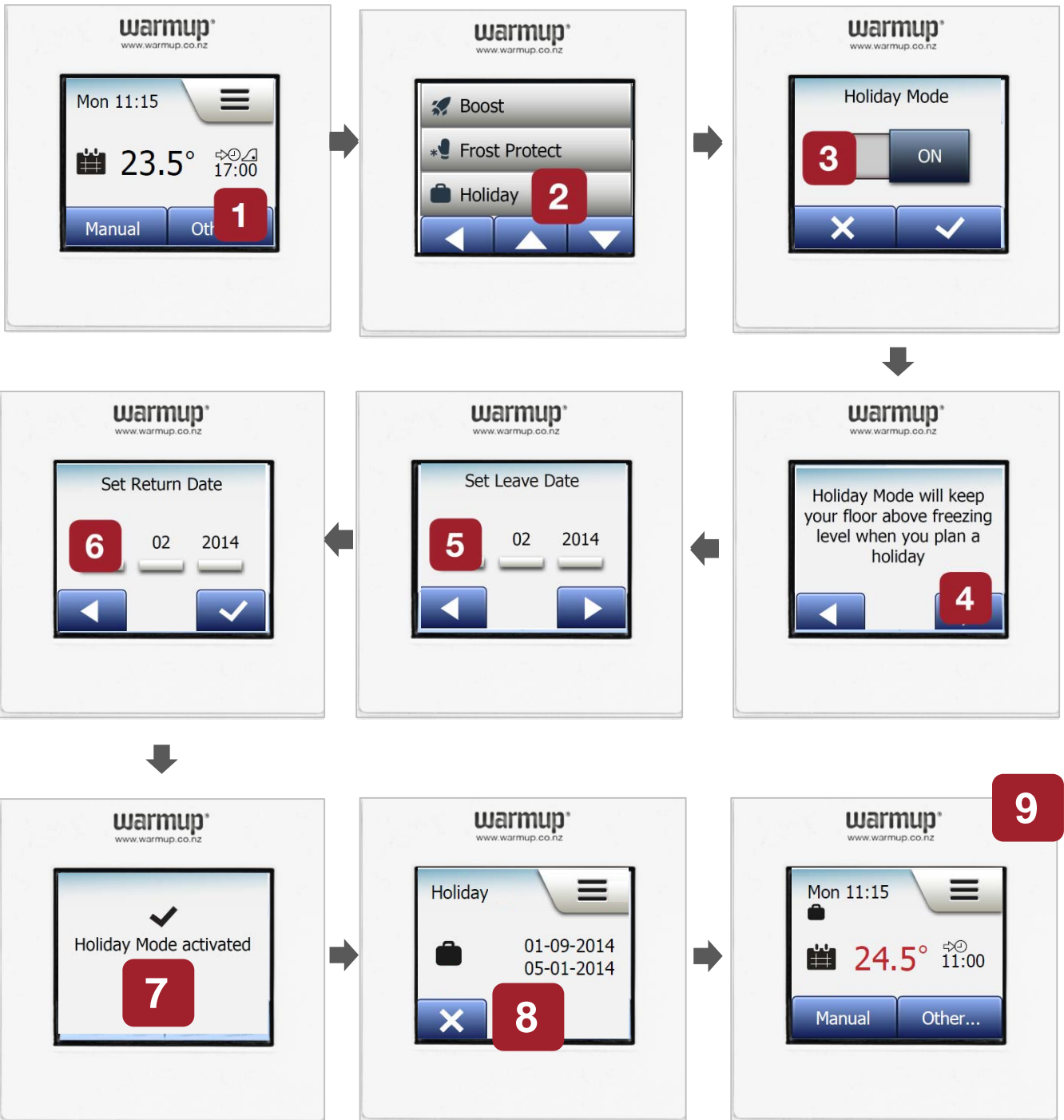
Boost Mode

In boost mode the heating is activated for one hour. After one hour the thermostat returns to Scheduled Operation.



Holiday Mode

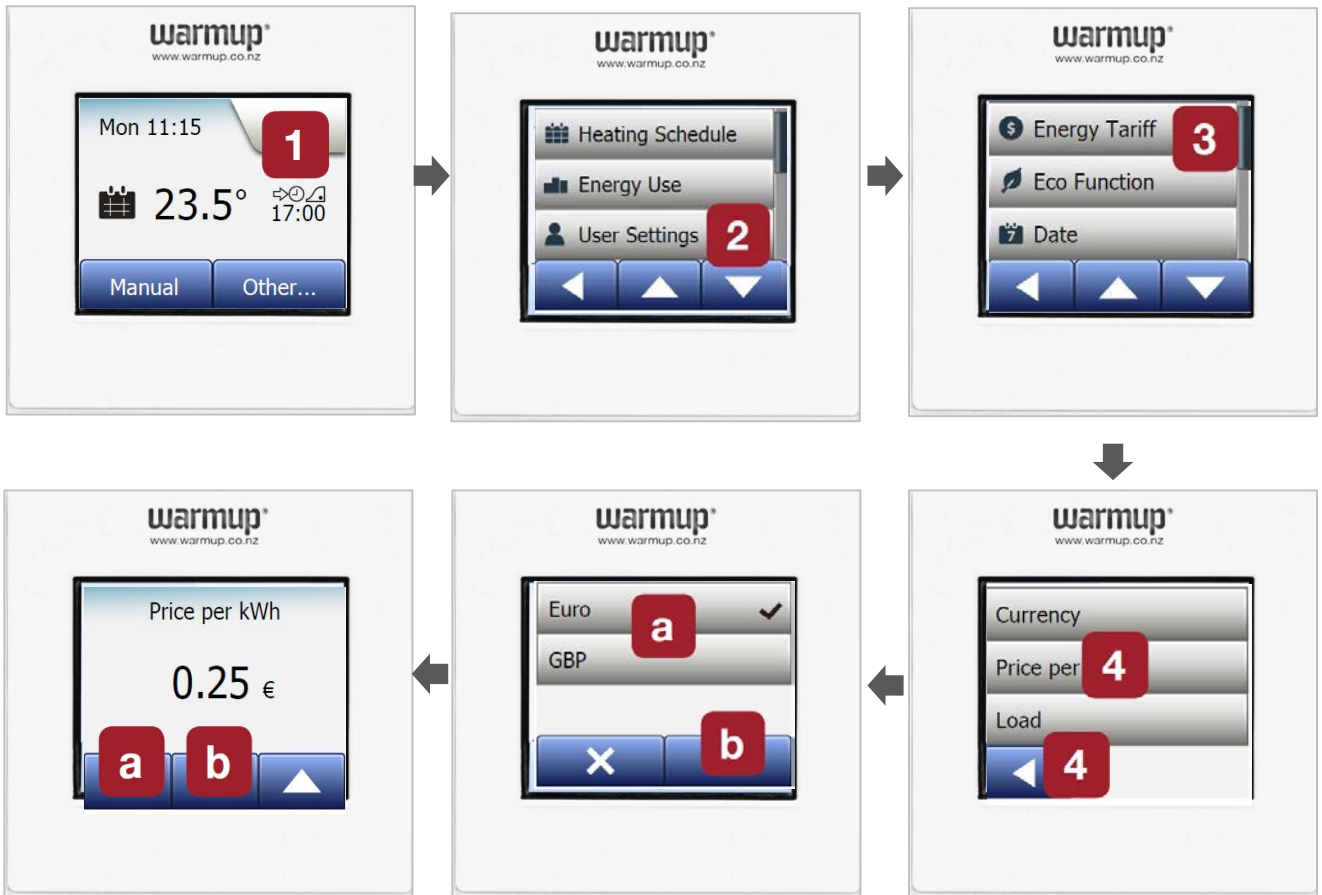
Holiday mode allows you to set your heating to a minimum while you are away on holiday, thus saving energy and money.



During an active holiday period a suitcase is displayed on the screen together with the programmed leaving and return dates. You can cancel an active holiday period and return the thermostat to Scheduled Operation by tapping the 'X' button.

Energy Tariff

The “Energy Tariff” button allows you to update the generic tariff with what you are paying your specific power supplier for a more accurate report.



Auto Load Readout – will automatically detect the wattage installed. If you desire to load it manually, click autoload off and then manually select your load

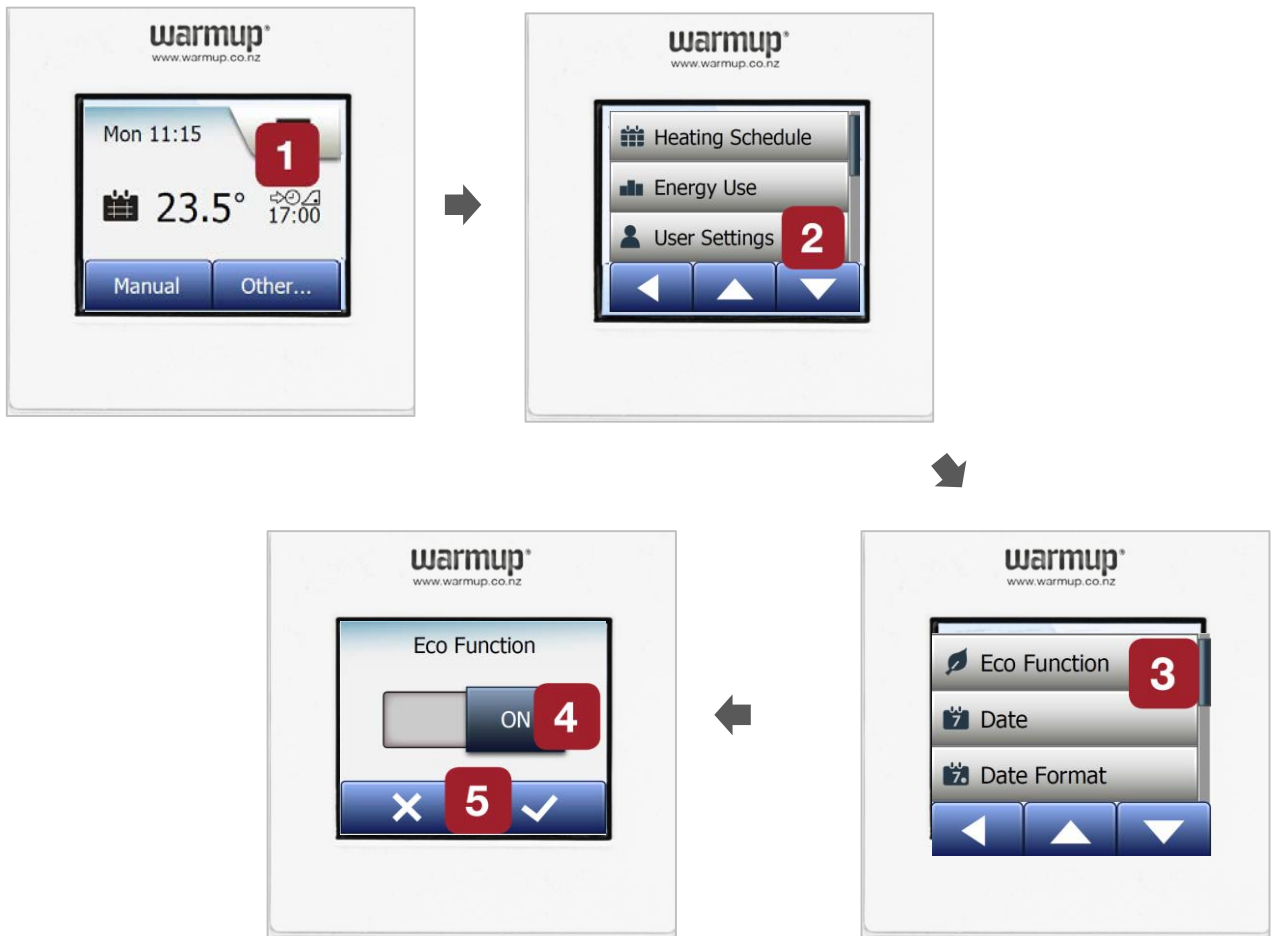
Select your required load – set the Kw load of your underfloor heating system manually. You should ask your heating engineer for this information.

Warning on the Max Load [04:57] 10 Kw

When done, return to the main menu by clicking on the screen.

Eco function

The “Eco function” button reduces the energy spent on unnecessary heating if you leave the room/house while the heating is on. We recommend that Eco function is left on.



With Eco function enabled, the Scheduled Operation home screen is altered. The lower left button “Manual” is changed to “Eco”,
Tap the “Eco” button to activate the Eco function

Energy Use

The “Energy Use” button allows you to read out energy usage data for your underfloor heating system.



You can scroll down using the down arrow  for energy usage for the following periods.

- Last 7 days
- Last month
- Last year
- An overview of electricity consumption (KWh) and heating costs for the time periods specified above.

Troubleshooting

Error messages – If a fault or error occurs, the thermostat will display one of the following error messages:

- E0** Internal failure
The thermostat is defective and must be replaced
- E1** Internal sensor defective or short-circuited. The thermostat must be replaced.
- E2** External wired floor sensor disconnected, defective or short-circuited. Contact your distributor for reconnection or replacement.
- E5** Internal overheating – arrange for the installation to be inspected.
- 3 circles containing dots** The thermostat cannot be operated – the thermostat is in “Child Lock” mode. Unlock it by following the steps below:
Draw an “L” on the screen in a single stroke joining the 3 dots without lifting your finger from the screen. Start by touching the dot in the upper left corner. You should now see the home screen.
The child lock will be reactivated when the thermostat returns to screen saver mode – unless it is deactivated in the menu.

For more information please refer to the Warmup website
<http://www.warmup.com.au/heating-products/thermostats>.

Warmup Australia Pty Ltd

T 1800 927 687 E info@warmup.com.au W www.warmup.com.au